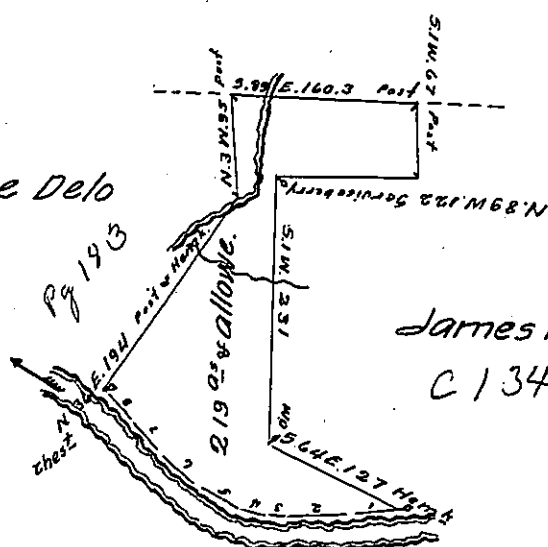


H. L. Company  
No. 29 27

George Delo



Courses & Distances down  
Clarion River from Hemlock

James McKesson  
C 134 - 284

- No. 1. S. 80 W. 41
- " 2 N. 87 W. 60
- " 3 N 74 W. 14
- " 4 N 67 W. 30
- " 5 N. 59 W. 36
- " 6 N. 53 W. 44
- " 7 N 44 W. 40
- " 8 N 51 W. 27 to Chestnut

Draft of a tract of land situate in Beaver township, Venango county, North of, and adjoining Clarion River. Surveyed 27<sup>th</sup> May 1836, in pursuance of a Warrant granted to Daniel Delo, dated 15<sup>th</sup> February 1836.

Rich<sup>d</sup> Irwin D.S.

John Taylor Esq

Surveyor General of Pa.

IN TESTIMONY that the above is a copy of the original remaining on file in the Department of Internal Affairs of Pennsylvania, made conformably to an Act of Assembly approved the 16th day of February, 1833, I have hereunto set my Hand and caused the Seal of said Department to be affixed at Harrisburg, this ten<sup>th</sup> day of August 1904

*James B. Brown*  
Secretary of Internal Affairs.